

MV

POSSIBILITIES TO DESIGN THE SPACE

## MOREVIEW - SYSTEM FEATURES

System of large sliding doors with narrow profiles, completely hidden in the floor, walls and ceiling.

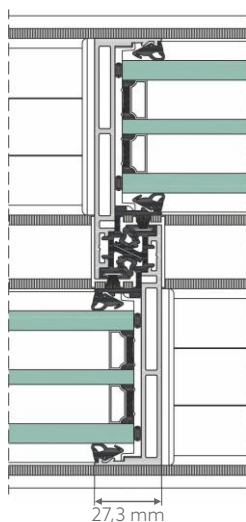
At Moreview, you can order doors with a maximum height of 4 m. and a maximum weight of a sliding leaf of up to 1200 kg. The aesthetics of the design are added, among other things, by the visible profile width when lowering the leaves, which is only 27 mm. The innovative design allows you to install double-glazed windows next to each other without aluminum parts visible from the outside. Using a static profile, you can perform a series of continuous glazing, and the all-glass corner allows you to set them at any angle.

Photo: Example of system use

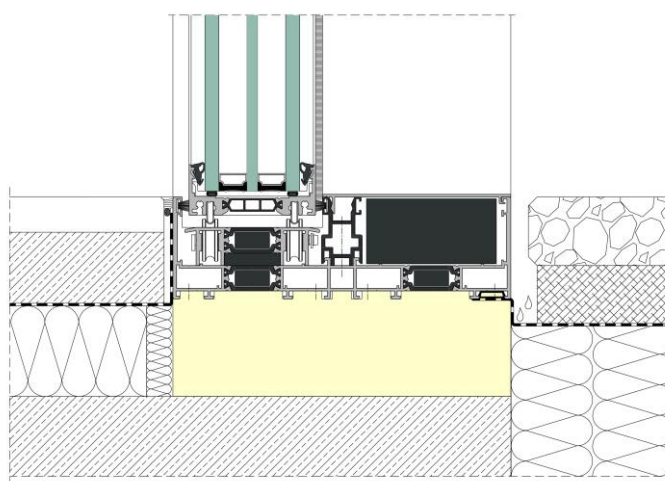


## ADVANTAGES OF THE SYSTEM

- unlimited access to sunlight - transparency up to 98%,
- independent structures of the Moreview system can be connected at 90° angle,
- a static mullion allows for designing a row of fixed glazing which can be additionally connected at any angle thanks to using an all-glass corner,
- manual or automatic control. The control mechanism is hidden or assembled at the outside of the construction,
- the possibility of glazing from the outside,
- linear drainage integrated with the frame,
- the Moreview system allows for the replacement of worn guide rolls without the necessity to disassemble heavy door leaves.

CROSS-SECTION OF  
LEAF CONNECTION  
MOREVIEW

CROSS SECTION OF THE DOOR FRAME MOREVIEW



## TECHNICAL PARAMETERS - MOREVIEW

Air permeability	class 4 acc. to PN-EN 12207
Water tightness	class 9A acc. to PN-EN 12208
Wind load resistance	class C4 acc. to PN-EN 12210
Heat transfer coefficient	U <sub>w</sub> from 0,7 W/m <sup>2</sup> K
Anti-theft protection	class RC2
Acoustic insulation	R <sub>w</sub> 42 dB
Impact resistance	class I5/E5 acc. to PN-EN 14019

## SYSTEM CHARACTERISTICS

Maximum weight of manually operated sliding leaf	400 kg
Maximum weight of automatically operated sliding leaf	1200 kg
Maximum weight of fixed leaf	1000 kg
Maximum height of construction	4 m
Maximum width of construction	4 m
Glass thickness	50 - 60 mm
Construction depth for double-rail guide	192 mm
Construction depth for triple-rail guide	294 mm
Construction depth for leaf	72 mm
Visible width of sliding door leaf connection	27 mm